



# 2006 Royal Oak Parks and Recreation Master Plan

Prepared by:  
Wilcox Professional Services, LLC

February 2006

# 2006 Royal Oak Parks and Recreation Master Plan

City of Royal Oak, Michigan

Prepared by:



Wilcox Professional Services, LLC  
5859 Sherman Road  
Saginaw, Michigan 48604  
Telephone: (989) 752-6500  
Facsimile: (989) 752-6600

February 2006

# Acknowledgments

The participation and cooperation of community leaders, residents and members of civic organizations in the preparation of the 2006 Royal Oak Parks and Recreation Master Plan is greatly appreciated. In particular, we acknowledge the efforts of the following individuals:

## Royal Oak City Commission

Jim Ellison, Mayor  
Michael Andrzejak  
Patricia Capello  
Terry Drinkwine  
Carlo Ginotti  
Gary Lelito  
Stephen Miller

## City Manager

Tom R. Hoover

## Royal Oak Parks and Recreation Advisory Board

Ann Hubbarth, Chairperson  
Tod Mening, Vice-Chairperson  
Gary Andrus, Secretary  
Terry Drinkwine, City Commissioner  
Mark Ryan  
Stan Schaffer  
Jeff Roggenbuck  
Rob Weber  
Rob Winter

## Royal Oak Department of Recreation and Public Service

Greg Rassel, Director of Recreation and Public Service  
Tod Gazetti, Superintendent of Recreation

## Table of Contents

SECTION I: COMMUNITY DESCRIPTION .....	1
A. Regional Location .....	1
SECTION II: Administrative Structure.....	3
A. Administrative Organization .....	3
SECTION III: INVENTORY OF RECREATIONAL FACILITIES AND PROGRAMS .....	5
A. Overview .....	5
B. Municipal Facilities .....	5
C. School Facilities .....	5
D. Private Recreation Facilities.....	6
E. Regional Recreation Resources .....	6
F. Grant-Assisted Park and Facilities .....	6
G. Budget.....	7
H. Programs.....	7
I. Recreation Deficiencies .....	11
SECTION IV: THE PUBLIC INPUT PROCESS .....	13
A. Programming.....	14
B. Administration and Organization .....	15
C. Facilities .....	15
D. Recreation Land.....	16
E. Nature Parks .....	16
F. Access To Facilities .....	16
SECTION VI: BASIS FOR ACTION PLAN .....	18
SECTION VII: APPENDIX .....	23

## List of Maps, Figures and Tables

Map 1 – Regional Location .....	2
Figure 1 – Administration Organization Chart.....	4
Table 1 – Existing Recreational Facilities Inventory .....	8
Map 2 – Existing Parks .....	9
Table 2 – Existing Regional Parks and Recreation Facilities.....	10
Table 3 – Summary of Action Items.....	19
Table 4 – Capital Improvements .....	21

## SECTION I: COMMUNITY DESCRIPTION

In its continuing effort to provide quality recreational opportunities for its citizens, the City of Royal Oak has created the 2006 Royal Oak Parks and Recreation Master Plan as a tool to guide the development of City-maintained recreational facilities and locations over the next five years. An extensive recreation plan was conducted in 1999. The 2006 Parks and Recreation Master Plan is the latest effort by the City to establish new recreational goals and objectives for the community, which will focus on maintenance and development over the next five years. The 2006 plan will also make the City eligible for grants from the Michigan Department of Natural Resources (MDNR) to assist the City in reaching its recreational goals.

The jurisdiction of this plan is solely for the City of Royal Oak, and focuses on all aspects of park recreation and programming.

The Royal Oak Parks and Recreation Advisory Board consists of representatives from the City who are concerned with providing a wide array of quality recreational opportunities. This Board has been fundamental in providing information about the community and guidance for the direction of the recreation plan throughout the planning process.

Based on the information gathered, an analysis determined where the community is deficient or is providing a surplus of various recreation facilities and programs in comparison to national standards. Public input from residents and Advisory Board members provided a better picture of which recreation facilities are needed and desired by the public. The final Parks and Recreation Master Plan reflects which new facilities and improvements to existing facilities will best address the needs and desires of Royal Oak.

### A. Regional Location

The City of Royal Oak is located in Oakland County, Michigan, approximately 12 miles northwest of downtown Detroit. Within the County, Royal Oak is approximately ten miles southeast of downtown Pontiac. Royal Oak is within close proximity, less than two miles, of many Detroit suburbs including, Clawson, Troy, Sterling Heights, Madison Heights, Warren, Hazel Park, Ferndale, Pleasant Ridge, Huntington Woods, Oak Park, Southfield, Lathrup Village, Berkley, Beverly Hills and Birmingham. The area of the City of Royal Oak is roughly 12 square miles (See Map 1).

Located on the eastern border of the City is Interstate 75, a major interstate highway which runs from southern Florida to northern Michigan. On the southern border is Interstate 696, a major highway traveling east-west and bisecting the major northern suburbs of Detroit. These highways provide the community with convenient regional access to the rest of the Metropolitan Detroit area and to the rural areas on the periphery of the metropolitan area.

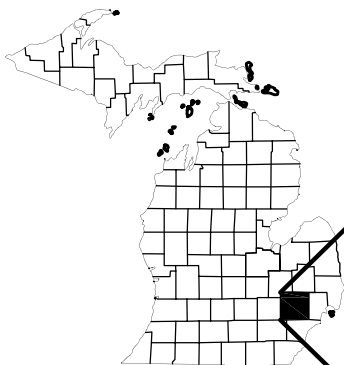
Royal Oak is located in the center of the northern suburban development of Detroit. As one of the first developments on the periphery of Detroit to experience increased growth, Royal Oak is characteristically more dense than its neighboring communities. While the vast majority of communities in southeast Oakland County, southern Macomb County and western Wayne County exhibit typical suburban characteristics of large residential lots and strip commercial development with no central focus, Royal Oak has an established downtown and distinct neighborhoods which offset it from neighboring communities. The neighboring communities are fully developed. Royal Oak must continue to meet the recreational needs of its residents with limited possibility of expansion of park land due to its location.

# ROYAL OAK PARKS AND RECREATION

## CITY OF ROYAL OAK, MI PARK LOCATION MAP



### REGIONAL LOCATION MAP 1



ROYAL OAK, MI  
NOT TO SCALE

WALK	WARREN	WARREN	WARREN	WARREN
WARREN	WARREN	WARREN	WARREN	WARREN
WARREN	WARREN	WARREN	WARREN	WARREN
WARREN	WARREN	WARREN	WARREN	WARREN
WARREN	WARREN	WARREN	WARREN	WARREN

ROYAL OAK

**Wilcox**



**Professional  
Services**

AN ISO 9001  
CERTIFIED COMPANY

[WWW.WILCOXASSOCIATES.COM](http://WWW.WILCOXASSOCIATES.COM)

5859 SHERMAN ROAD • SAGINAW, MICHIGAN 48604  
PHONE (989) 752-6500 • FAX (989) 752-6600  
TOLL FREE (888) 752-6500

## SECTION II: Administrative Structure

### A. Administrative Organization

Figure 1 illustrates the administrative structure currently in place.

The Board advises the Commission on policies affecting the operation of the Recreation and Parks & Forestry services; and advises the Commission, City Manager and Director of Recreation and Public Works on all other matters pertaining to Recreation programming and Parks & Forestry services. The Board is comprised of nine members appointed by the Commission to three-year terms. The Board meets the first Thursday of the month September through May and June, July and August as required. The Director of Recreation and Public Service and the Recreation Supervisor are ex-officio members of the Advisory Board.

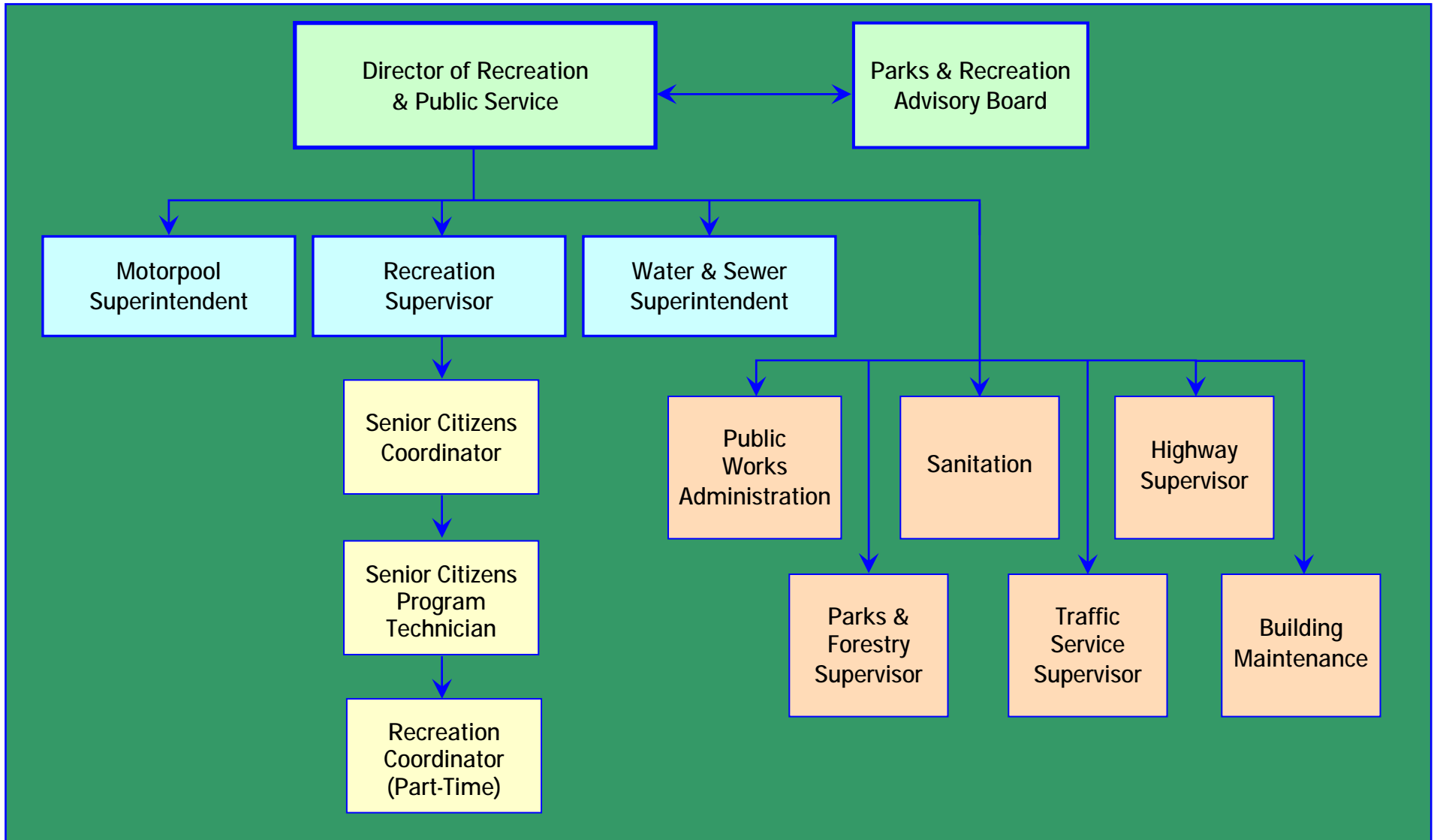
The Director of Recreation and Public Service has direct authority from the City Manager. The Director manages the City's auto parking, building maintenance, fleet maintenance, highways, parks and forestry, solid waste, street maintenance, and water/sewer/electrical. The Director performs administrative duties in addition to meeting with the Parks and Recreation Advisory Board.

The Recreation Supervisor is responsible for planning, developing and evaluating community recreation activities and programs. In addition, the Recreation Director oversees the Senior Citizens Coordinator, Senior Citizens Program Technician and the part-time Recreation Coordinator. All recreation programs are to be self supporting with no support from the general fund.

Royal Oak has a tremendous amount of avenues and opportunities for volunteerism. There are over twenty community groups that often direct their time and energy to parks and recreation. The most notable of these groups is the Royal Oak Nature Society, and the numerous neighborhood park groups that adopt a specific neighborhood park. These neighborhood park committees routinely rid the parks of trash and tree debris and hold neighborhood gatherings at the individual parks. Each of these community volunteering efforts is funneled through the Recreation Supervisor and the Director of Recreation and Public Service to maximize their efforts, and provide them any needed support.

**FIGURE 1**

**Recreation Administration Structure**  
City of Royal Oak





## SECTION III: INVENTORY OF RECREATIONAL FACILITIES AND PROGRAMS

### A. Overview

An inventory of existing local and regional recreation facilities was conducted by professionals from Wilcox Professional Services in September of 2005. The physical inventory of local facilities consisted of site inspections of all city parks and recreation sites. An inventory of playground equipment and park facilities was recorded and reviewed with regard to location, acreage, quantity, quality, accessibility, and condition (See Table 1). The regional inventory consisted of review and compilation of regional park facilities, brochures, and past telephone interviews (See Table 2).

### B. Municipal Facilities

There are currently 17 vest pocket parks, 23 neighborhood parks, 9 community parks and 2 community centers for a total of 51 public park and recreation facilities within the City of Royal Oak (See Map 2). In addition, there is an urban plaza, located adjacent to City Hall, used for special events such as the Christmas lighting ceremony and outdoor concerts. All these facilities are owned and maintained by the City of Royal Oak.

Table 1 illustrates the existing inventory of recreational equipment and fields at these facilities. Play areas include various fields for organized games such as baseball, football and soccer. Hard court areas include tennis and basketball courts. Play structures include both modular and timber equipment while playground equipment includes swingsets, slides and jungle gyms. The vast majority of the existing parks have some kind of play equipment available to the public.

### C. School Facilities

The Royal Oak Neighborhood School District currently has 9 elementary, 2 middle schools and 2 high schools located in the City of Royal Oak. All of these school facilities have some form of recreational facilities or equipment either inside or outside of the buildings. These facilities, when available, are used by the Department of Recreation and Public Service to provide recreation programs. While an official inventory was not conducted, it was observed that some elementary schools have play structures or equipment such as swings and slides. In addition, the middle schools and high schools have ball fields, hard court areas and gymnasiums for indoor recreation.

The most notable recreation amenity at the school facilities are the indoor swimming pools located in the two high schools. The City currently does not own any swimming facilities and the pools located at the high schools are the primary opportunity for swimming in the City. It should be noted that a swim facility does exist at the YMCA in the City but it does not appear to adequately address the needs of the residents.

The school facilities' main purpose is to provide recreational opportunities for the students in attendance at the respective schools. However, when coordinated with the school district, facilities can be used by the general public under certain conditions. This practice is seen in many communities and in general school facilities have an average service area based on the amenities they have to offer. The

amenities available are generally in direct correlation to the type of school. Elementary schools serve the residents of the neighborhoods in which they are located, while the middle schools and the high schools tend to serve a broader population base. Since the primary users of the recreation facilities are the students, the general public should not depend greatly on school facilities to meet their recreational needs.

## D. Private Recreation Facilities

Several privately-owned recreation facilities are also located in or near the City of Royal Oak. Although use of these facilities is limited to those who can afford the fees, they do address certain recreation needs. Private recreation facilities include the Red Run Golf Club. Adjacent community facilities include: limited private recreation facilities located within local apartment complexes and condominium developments in the City.

The City also has agreements with private companies to organize, maintain and manage several recreational facilities. Total Soccer, Grand Slam Baseball, Royal Oak Golf Driving Range and Adventure Golf lease facilities from the City and proceeds are placed in the General Fund. Activities include indoor soccer, batting cages, a driving range and a miniature golf course. These agreements have proven to generate some additional revenue for the City's general fund and a wider variety of recreational opportunities for the residents. The management and care of these facilities are the responsibility of the private companies.

## E. Regional Recreation Resources

Regional recreation areas are large facilities serving people within a broad geographic area. The region has been defined as the area within roughly a one-half to one hour driving radius of Royal Oak. Table 2 summarizes these regional facilities. The size and type of facilities vary, but in general these facilities are 200 acres or more in size.

It should be noted that there are several other municipal facilities within the City but which are maintained by departments other than the Department of Recreation and Public Service. Royal Oak Golf Course and Normandy Golf Course are municipal facilities which are managed by private companies under contract with the City and is overseen by the Recreation Department. Combined, these courses schedule nearly 80,000 rounds of golf per year. The John Lindell Ice Arena has two ice surfaces which are in constant demand. The Arena Manager and Recreation Superintendent supervise the management and activities at the Ice Arena.

## F. Grant-Assisted Park and Facilities

The City of Royal Oak has only received funding to identify and replace their ash trees based on the recent epidemic caused from the Emerald Ash Borer. This program is with the State of Michigan.

There are no other grant-assisted parks or facilities within the City of Royal Oak.

## G. Budget

The City of Royal Oak directs to its Parks/Forestry Department \$1,025,000.00, Recreation Department \$655,000.00, and to its Senior Programs \$330,000.00 from its direct fund.

## H. Programs

### Adult Fitness

Cardio Aerobics  
Abs, Glutes & Thighs  
Total Body  
Basic Strength  
Tai Chi  
Water Aerobics  
Handbell Choir  
HathaYoga  
Pilates Intro  
Mat Pilates  
Power Pilates  
Intro to Curling  
Ballroom Dance  
Table Tennis

### Family / Individual Enrichment

Roller Skating Classes  
Youth Sanchin-Ryu Karate  
Individual / Family Sanchin-Ryu Karate  
Knitting  
Intro to Fiber Animals  
Spinning & Knitting Advent  
Pre-Teen Knitting  
Adult-Beginning Knitting

### Gymboree

Gym Classes  
Music Classes

### Playaway Activities

Drop-in Playtime  
PlayFriends  
PlayBabies  
PlayClass  
PlayPals

Tumbling Tots  
Messy Me  
Guitar Get-together  
Club 3-5  
Tumbling Time w/ Dad

### Preschool Program

Story Time  
Science  
Phys. Ed.  
Art  
Music  
Free Play Time  
Computers

### Athletics

Adult Softball, Basketball, Volleyball, Football  
Self-Defense - Girls  
Self-Defense - Women  
Junior Golf Lessons  
Adult Golf Lessons

### Spectrum Yoga

Yoga I  
Yoga II

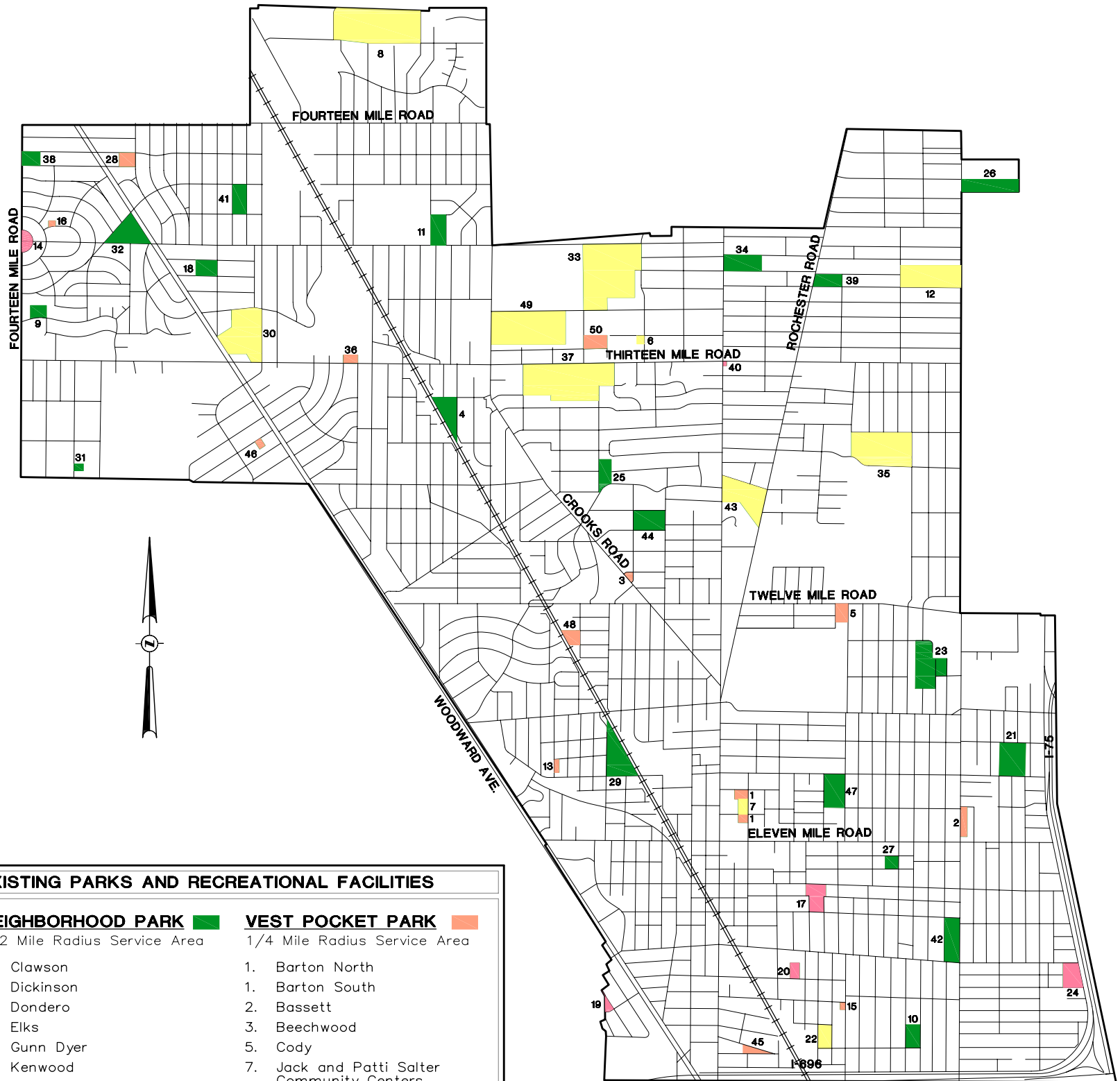
### Youth Activities

Sports Starters  
Kiddie Sports & Games  
Kiddie Sports  
Tee Ball  
Grasshopper Basketball  
ROSL-Baseball  
ROSL-Softball  
ROYSA Soccer



# ROYAL OAK PARKS AND RECREATION

CITY OF ROYAL OAK, MI  
PARK LOCATION MAP



## EXISTING PARKS AND RECREATIONAL FACILITIES

### NEIGHBORHOOD PARK

1/2 Mile Radius Service Area

- 4. Clawson
- 9. Dickinson
- 10. Dondero
- 11. Elks
- 18. Gunn Dyer
- 21. Kenwood
- 23. Lockman
- 25. Marais
- 26. Mark Twain
- 27. Marks
- 29. Meininger
- 31. Miller
- 32. Pioneer
- 34. Realtor
- 38. Sullivan
- 39. Fred Piper Optimist
- 41. Upton
- 42. VFW
- 44. Waterworks
- 47. Whittier

### NON-DEDICATED

- 14. Fries
- 17. Grant
- 20. Hudson
- 19. Huntington Woods
- 24. Maddock
- 40. 13 Mile/Main

### VEST POCKET PARK

1/4 Mile Radius Service Area

- 1. Barton North
- 1. Barton South
- 2. Bassett
- 3. Beechwood
- 5. Cody
- 7. Jack and Patti Salter Community Centers
- 13. Fernwood
- 15. Franklin
- 16. Fulton
- 28. Maudlin
- 36. Rotary
- 45. Wendland
- 46. Westwood
- 48. Woodsboro
- 50. Worden East

### COMMUNITY PARK

1 Mile Radius Service Area

- 6. Leo Mahany\Harold Meiniger Senior Community Center
- 8. Cummingston
- 12. Exchange Park
- 22. Lawson
- 30. Memorial
- 33. Quickstand
- 35. Red Run
- 37. Starr/JC
- 43. Wagner
- 49. Worden

**Wilcox**



**Professional  
Services**

AN ISO 9001  
CERTIFIED COMPANY

[WWW.WILCOXASSOCIATES.COM](http://WWW.WILCOXASSOCIATES.COM)

5859 SHERMAN ROAD • SAGINAW, MICHIGAN 48604  
PHONE (989) 752-6500 • FAX (989) 752-6600  
TOLL FREE (888) 752-6500

TABLE 2

Existing Regional Parks and Recreation Facilities  
City of Royal Oak

Facilities Available On Site	Bald Mountain State Recreation Area	Brighton Recreation Area	Genesee Recreation Area	Highland Recreation Area	Holly Recreation Area	Island Lake State Recreation Area	Maybury State Park	Metamora-Hadley Recreation Area	Ortonville State Recreation Area	Pickney State Recreation Area	Proud Lake Recreation Area	Seven Lakes State Park	Sleepy Hollow State Park	Wetzel State Park	Deihi Metropark	Dexter-Huron Metropark	Hudson Mills Metropark	Huron Meadows Metropark	Indian Springs Metropark	Kensington Metropark	Lake Erie Metropark	Lower Huron Metropark	Metrobeach Metropark	Oakwoods Metropark	Stony Creek Metropark	Willow Metropark	Wolcott Metropark	Buell Lake County Park	Flushing County Park	Fomar Nature Preserve and Arboretum	Holloway Reserve Regional park	Linden County Park	
Acres	4637	4913	4460	5624	7670			683		1100	3614	1410			53	123	1544	1539	2215	4357	1607	1258	770	1700	4461	1500	2380	213	105	380	5860	135	
Camping		√	√	√	√			√	√		√	√	√				√				√											√	
Organizational Camping		√		√	√	√					√		√				√	√		√						√							
Camping Fees		√		√	√			√			√	√	√																				
Cabin Rental		√		√	√	√		√			√																						
Picnic Areas		√	√	√	√			√	√		√	√			√	√	√	√	√	√	√	√	√	√	√	√		√	√		√	√	
Concession Stands/ Bathhouses		√	√	√	√			√			√	√					√	√	√	√	√	√	√	√	√								
Picnic Shelters		√	√	√	√			√			√	√			√	√	√	√	√	√	√	√	√	√	√	√		√	√		√	√	
Playground/ Play Area		√	√		√			√				√			√	√	√	√	√	√	√	√	√	√	√	√	√	√	√	√	√	√	√
Boat Launch		√	√	√	√	√					√	√							√	√	√	√	√	√	√							√	
Boat or Canoe Rental			√			√									√			√		√	√	√			√	√		√					
Swimming/ Beach		√	√	√	√	√		√	√		√	√	√						√	√	√	√	√	√	√	√					√	√	
Fishing	√	√	√	√	√	√	√	√	√	√	√	√	√		√	√	√	√	√	√	√	√	√	√	√	√	√	√	√	√	√	√	√
Cross Country Skiing	√	√	√	√	√				√		√	√		√	√	√	√	√	√	√	√	√	√	√	√	√		√	√	√	√	√	
Cross Country Ski Rental																	√	√	√	√	√	√	√	√	√								
Snowmobiling		√	√	√	√				√		√	√		√														√	√			√	√
Sledding			√																√	√	√	√	√	√	√	√							
Ice Skating							√														√	√			√	√							
Riding Stables w/ Horse Rental																																	
Without Horse Rental/ Horseback Riding		√	√	√	√						√																						√
Full Service Tack Shop																																	
Nature Center/ Grist Mill/ Visitor Center			√																√		√			√	√							√	
Farm Center							√														√												
Hunting		√		√	√	√		√	√	√	√	√		√																			
Field Dog Trail Areas																																	
Shooting Range	√																																
Hiking Trails/ Nature Trails	√	√	√	√	√	√	√	√	√	√	√	√	√	√	√	√	√	X	√	√		√	√	√	√	√		√	√	√	√	√	√
Paved Bike Trails	√																√		√		√	√	√	√	√								
Mountain Bike Trails	√	√	√	√	√			√	√	√		√							√	√								√	√				
Bike Rental																																	
Golf – 18 holes																	√	√	√	√	√	√				√							
Disk Golf – 18 holes																																	
Softball Fields			√																									√	√		√	√	
Sand Volleyball																																	
Basketball																																	
Horseshoe Pits																																	
Waterslide																																	
Hot Air Balloon Port/ Excursion Boat																																	
Rest Rooms	√		√												√	√	√	√	√	√	√	√	√	√	√	√				√	√		
Rest Rooms – Rustic Only																																	
Historic Site																																	
Marina/ Dockage																					√	√		√									

## I. Recreation Deficiencies

### 1. Existing Facilities

The Department of Natural Resources provides communities recreation standards recommended by the National Recreation and Park Association and by the Michigan Department of Natural Resources. These standards recommend minimum standards for different recreation facilities based on existing and projected population. The raw numbers do not address the *quality* of existing parks and recreation facilities. Upon closer examination, deficiencies or limitations are apparent because of the location, accessibility, maintenance, level of development and individual size of existing open space available. These standards were reviewed and considered, but were not the deciding factor for recreational deficiencies, they were only used as a guide.

### 2. Dedicated Parks

The financial status of Royal Oak is contusive to the financial state of the State of Michigan and its surrounding communities. Royal Oak has thus needed to be progressive in its plan for financial turn around and is currently inventorying public land that could be sold for development. Although park land is not considered for this Royal Oak has a park classification system of dedicated and non-dedicated parks. It is much more difficult to sell dedicated parks, and it is the hope of the residents to dedicate all non-dedicated parks.

### 3. Nature Areas

Royal Oak has two Nature Areas; Quickstand and Cummington. Currently these areas are not represented within the Five Year Park and Recreation Plan. Their goals and objectives are currently segregated from the City, and currently have no authority to write grants.

### 4. Service Areas

Map 2 illustrates the park location and type (vest pocket, neighborhood and community) in Royal Oak. The Map indicates that the City has a very good distribution of parks, serving the vast majority of the City with several park types. However, an area in the southwest section of the City is not serviced by any neighborhood or vest pocket parks. The residents of this area must cross a major-thoroughfare to access a smaller park which typically should be within 1/4 to 1/2 mile away, an average 15-minute walk.

The major land use in Royal Oak is single family residential. According to the Southeast Michigan Council of Governments (SEMCOG), approximately 62.8% of the City is used for single family residential purposes. Multiple family residential land uses occupy only 4.4%, or 335 acres. The majority of the land in the City has been developed, leaving no room for new subdivisions. Any new housing being constructed is being placed on single lots or larger lots that are a consolidation of smaller residential lots. The existing residential areas have developed into well defined residential neighborhoods. Major roads, commercial and industrial areas act as boundaries between many residential neighborhoods. As a result, basic recreational needs for the neighborhoods can be addressed within their own areas by providing for small parks and green areas that are accessible by foot without crossing major roadways.

The majority of the intense development in the City has occurred along the major roads, specifically, Woodward Avenue and Main Street in the downtown area. Over 598 acres in the City (8.0%) have been developed for commercial uses and the vast majority of businesses are located within these areas. Industrial uses are generally located in the northern and eastern areas of the City, occupying roughly 300 acres (4.0%).

The remaining areas of Royal Oak are occupied by public schools, buildings, churches, transportation corridors and utilities. The only areas of vacant land are located at I-696 and Main Street and at I-696 and the railroad. The City is built out, leaving very little opportunities for any large scale expansion of existing recreational facilities or acquisition of land for new facilities. Any opportunities for such expansion or acquisition in the future would depend greatly upon the vacating of an existing use from its current location. This option is not desirable and will not be encouraged. However, if any opportunities occur in the future, the possibility for expansion or acquisition should be consider only if it would help meet the recreational goals of the plan.

## **5. ADA Compliance**

The American with Disabilities Act requires that all citizens have access to all facilities provided by the City regardless of physical disability. Many of the parks in the City have been or are in the process of becoming accessible to all people. A concern was expressed at the public hearing regarding the ability for the hearing impaired to participate in City programs. The City should insure that all citizens have access to all programs.



## SECTION IV: THE PUBLIC INPUT PROCESS

The Royal Oak Parks and Recreation Advisory Board is made up of individuals that represent a litany of recreation user groups, including a City Commissioner who sits on the City Board. This group routinely meets September-June and advises the City to park and recreation issues. Each meeting is open to the public, and should the public have concerns or ideas on the park system this Board is the first rung in the governmental ladder for change.

The first input meeting with the Royal Oak Parks and Recreation Advisory Board was to devise a list of Action Items based on the needs of their user groups, and the past Five Year Park and Recreation Plan. Once this list was tabulated, it was distributed to the Advisory Board Members, and they took it back to their user groups for input. These user groups include various neighborhood park groups and club organizations.

In order to increase ownership of the Five Year Park and Recreation Plan by community members, the City of Royal Oak held two public meetings prior to the development of the plan, and input received directly from these meetings has driven the Plan's content. These two meetings both took place at Royal Oak Parks and Recreation Advisory Board meetings on October 13 and November 3, 2005. Meeting notices, agendas, minutes, and sign-in sheets are found within the Appendix. These meetings were well attended due to the much publicized plan to review and evaluate public land for possible development. The Royal Oak Parks and Recreation Advisory Board takes this matter very seriously and used these meetings to get public input not only to the plan, but to get the public's opinion on selling public land on record.

At the beginning of each public hearing, a presentation was made outlining the recreation plan process, information gathered to that point, and initial findings. After an outline of the process and a description of the purpose for the plan, a brief summary of the demographic information gathered was presented. Initial findings based on the information were also presented. Throughout the presentation, questions from the public were answered. Following the presentation, all members of the public had the opportunity to ask further questions or express their comments and concerns regarding recreation facilities and programs. The following is a summary of the issues discussed at both public hearings.

A draft was presented to the Royal Oak Parks and Recreation Advisory Board on December 8, 2005 for review and comment, as well as a copy for the general public to review at the Salter Community Center, 1545 East Lincoln Ave. **There was no public input on the Five Year Park and Recreation Master Plan from the Plan that was on display for review, thus there are no comments within the Appendix.**

On March 20, 2006 the City of Royal Oak adopted the Five Year Park and Recreation Plan. A copy of the resolution is found within the Appendix.

## SECTION V: GOALS AND OBJECTIVES

Goals should be broad and address general needs, and establish the basis for setting specific programmed objectives. Objectives are measurable results that the Community works toward accomplishing.

### A. Programming

The following list of programming goals and objectives are part of an ongoing program with the City of Royal Oak. These were derived from past public surveys, public input at Community Centers, City Commission and the staff at the City of Royal Oak.

1. **Goal:** Continue evaluation of all programs and adjust the type and form of programs to suit community needs.
2. **Goal:** Improvement of existing programs.
  - Objective: Maintain affordable rates for program participation.
  - Objective: Continue good public relations for special events.
3. **Goal:** Create new programs.
  - Objective: Provide programming for teens based on input from teen focus groups.
  - Objective: Institute mechanisms to fully integrate all programs for children/persons with disabilities.
  - Objective: Continually update program selection with respect to new ideas and interests especially in regard to hobbies and exercise.
  - Objective: Create programs that provide inter-generational interaction between seniors and youth/preschoolers.
  - Objective: Create new programs to enhance physical fitness including, roller blading, walking, jogging, etc.
4. **Goal:** Provide the community with municipal recreation, leisure and cultural programs that are accessible and affordable to all citizens.
  - Objective: Continue leadership efforts in establishing collaborative programming, workshops, training, and networking opportunities for youth-serving community agencies which would result in enhanced services to area youth.
  - Objective: Work with community organizations and colleges in facilitating a continuum of recreation and leisure programs for the community with an emphasis in neighborhoods with greater youth need.

Objective: Seek alternative funding for services in order to increase revenue, and decrease general fund contribution through requests to service clubs, private sector, and professional organizations for sponsorships of various programs.

Objective: Solicit and apply for state and local grants for recreation, leisure, and cultural arts programs.

Objective: Recruit and train a pool of volunteers and mentors to assist in implementation of various programs.

## B. Administration and Organization

1. **Goal:** Investigate innovative ways to fund and reduce the costs of programming.
2. **Goal:** Provide staffing at levels commensurate to programming and maintenance needs.
3. **Goal:** Create mechanisms to maintain positive public relations.

Objective: Continue to provide regular opportunities for public input.

Objective: Continue working with neighborhoods to build partnerships and create ownership at neighborhood parks.

4. **Goal:** Continue and improve coordination with schools.

## C. Facilities

1. **Goal:** Provide facilities that meet the community wide recreation needs of Royal Oak residents.

Objective: Provide high quality ball diamonds and soccer fields/football fields and ancillary facilities for organized team play at community parks.

Objective: Provide a storage facility for football and baseball..

Objective: Provide turf improvements including irrigation.

Objective: Provide more bleachers.

Objective: Provide for more dog recreation.

Objective: Add trees for comfort.

Objective: Continue to grow the skate rinks and parks

- Goal:** Maintain a balanced system of parks and open spaces by having well operated and maintained facilities.

Objective: Continue to coordinate and assist in planned events in public spaces and parks.

Objective: Continue to collaborate with City operations (including Public Safety; Parks and Forestry; Recreation, Leisure and Cultural Services Division, and Planning) and neighborhoods to enhance security and use in parks by both organized private and public programs and activities.

Objective: Continue to remove existing physical barriers that limit use of parks and facilities by portions of the community.

Objective: Selectively prune, trim, and remove overgrown vegetation to open up views and provide natural surveillance of public gathering places.

## D. Recreation Land

- Goal:** Provide recreation land in the form of community parks, neighborhood parks and mini-parks which is convenient and accessible to all residents.

Objective: Research the possibility to obtain additional community park land in the southwestern portion of the City.

- Goal:** Protect parks from possible future sale.

Objective: Dedicate all parks within the City of Royal Oak Park System.

## E. Nature Parks

- Goal:** Provide more funding opportunities for the nature parks.

Objective: Work with the nature parks to develop goals and objectives that can be installed into the Five Year Park and Recreation Plan.

## F. Access To Facilities

- Goal:** Eliminate existing barriers to recreation facilities and programs by creating barrier-free facilities and adopting a policy of “inclusive recreation”.

Objective: Examine existing programs to ensure that they provide recreation and leisure opportunities to all residents regardless of their social, economic, or physical status.

- Objective: Ensure that each play setting and activity area is accessible, that accessible play components are placed throughout each activity area, and that similar play opportunities are provided to children with disabilities.
- Objective: Install accessible routes of travel, connecting parking areas, drop off points, all activity areas and accessible activities.
- Objective: Provide an accessible surface and pathway that is firm, stable, slip resistant, and resilient at all public recreational facilities.
- Objective: Provide a means of getting on, through (experience), and off the equipment for children with a range of mobility impairments.
- Objective: Ensure that landscape areas, gardens, picnic areas, and significant natural features are accessible.
- Objective: Provide more accessible parking.

## SECTION VI: BASIS FOR ACTION PLAN

This Chapter of the plan is the culmination of a comprehensive planning effort that began with the thorough analysis of the physical and demographic attributes of the Community. Existing parks and recreation facilities and programs were inventoried and evaluated. An assessment of need was then developed that considered both accepted recreation standards and the specialized needs of persons with disabilities. Finally, these needs were analyzed and reviewed by the Royal Oak Parks and Recreation Advisory Board with input from the public, Goals and Objectives were assigned and the following Tables 3 and 4 summarize the Action Plan and the Capital Improvement Plan to guide the Royal Oak Community through the next five years.

**TABLE 3**

## Summary of Action Items

### City of Royal Oak

Issue	Finding/Observation	Recommendation/Comments
<b>Existing Team Facilities</b>	Need Identified: <ul style="list-style-type: none"> <li>• Improvements requested at both public hearings</li> <li>• Organizations willing to contribute</li> <li>• Additional soccer field</li> </ul>	<ul style="list-style-type: none"> <li>• Upgrade existing field surfaces where necessary</li> <li>• Upgrade turf at necessary fields</li> <li>• Upgrade lighting at necessary fields</li> <li>• Install new storage facility</li> </ul>
<b>Dedicated Parks</b>	Need Identified: <ul style="list-style-type: none"> <li>• Hopes the City will not sell park land, and once parks are identified as dedicated this becomes increasingly difficult</li> <li>• Requested at both public hearings</li> </ul>	<ul style="list-style-type: none"> <li>• Research how to dedicate parks</li> <li>• Dedicate the parks based on public and City input</li> </ul>
<b>Nature/Ecological Facilities and Programs</b>	Need Identified: <ul style="list-style-type: none"> <li>• Nature areas need to be represented in the Five year Park and Recreation to be grant eligible through the DNR. Currently is in the Forest Management Plan.</li> </ul>	<ul style="list-style-type: none"> <li>• Coordinate the Nature Area's Goals and Objectives with the City's</li> <li>• Coordinate the Nature Area's programs with the City's</li> <li>• Implement the Nature Areas into the Five Year Park and Recreation Plan</li> </ul>
<b>Dog Parks</b>	Need Identified: <ul style="list-style-type: none"> <li>• Requested at both public hearings</li> <li>• One of the most requested outdoor facilities</li> <li>• Mark Twain Park was designated as the park needing this the most</li> </ul>	<ul style="list-style-type: none"> <li>• Coordinate with the parks department to identify if Mark Twain Park can hold such a facility</li> <li>• Create a dog park</li> </ul>
<b>Facility Deficiencies</b>	Need Identified: <ul style="list-style-type: none"> <li>• The parks are lacking in recreational elements as well as some elements need upgrading and replacement</li> <li>• Requested at both public hearings</li> </ul>	<ul style="list-style-type: none"> <li>• Upgrade and construct the identified deficiencies</li> </ul>

**TABLE 3 (continued)**

## Summary of Action Items City of Royal Oak

Issue	Finding/Observation	Recommendation/Comments
<b>Roller Blading/Skate Boarding</b>	Need Identified: <ul style="list-style-type: none"> <li>• Expansion</li> </ul>	<ul style="list-style-type: none"> <li>• Expand existing facilities based on use</li> </ul>
<b>Accessibility</b>	Accessibility to existing facilities needed <ul style="list-style-type: none"> <li>• Older play equipment not fully accessible</li> <li>• Parking facilities not fully accessible</li> </ul>	<ul style="list-style-type: none"> <li>• Continue installation of ADA signage, pathways and parking</li> </ul>
<b>Geographic Distribution</b>	Service Area Analysis identifies lack of coverage <ul style="list-style-type: none"> <li>• Area south of Webster, west of the Railroad and north of Catalpa</li> <li>• Area south of Eleven Mile, west of Washington and north of Lincoln</li> </ul>	<ul style="list-style-type: none"> <li>• Survey Area 1 for potential park sites</li> <li>• Coordinate with proposed parking structure project to create vest pocket park</li> </ul>



**TABLE 4**

## Capital Improvement Program Summary

### City of Royal Oak

Year	Facility/Program	Proposed Improvements	Estimated Cost	Funding Source
2006	Memorial, Exchange, Red Run, Kenwood Parks	Construct new pavilions with restrooms.	\$ 300,000	GF/LWCF
2006	Memorial Park	Provide ADA improvements.	\$ 25,000	MNRTF/LWCF/GF
2006	Memorial and Worden Park	Install irrigation system for playing fields.	\$ 92,000	MNRTF/LWCF/GF, Prvt.
2006	Non-Dedicated Parks	Dedicate.	\$ 0	N/A
2006	Quickstand and Cummington Nature Areas	Incorporate Nature Centers' Goals and Objectives into the Five Year Park and Recreation Plan.	\$ 0	N/A
2007	Memorial and Worden Park	Install lighting system for playing fields.	\$ 250,000	MNRTF/LWCF/GF, Prvt.
2007	Specific parks with athletic fields	Purchase portable bleachers (4).	\$ 10,000	GF
2007	Starr and JC Park	Install trees.	\$ 6,000	GF, Prvt., CDBG
2007	Whittier, Dickinson, Exchange, and Red Run Park	Turf improvements.	\$ 230,000	MNRTF/LWCF/GF, Prvt.
2007	Mark Twain Park	Install Dog Park.	\$ 27,000	GF
2008	Specific parks to be determined	Install athletic storage building (4-32'x40' on slab).	\$ 96,000	MNRTF/LWCF/GF, Prvt.
2008	Lockman, Whittier, and Fernwood Park	Upgrade basketball equipment.	\$ 4,500	GF
2008	Memorial Park	Expansion to skate park.	\$45,000	MNRTF/LWCF/GF, Prvt.

**TABLE 4 (continued)**

## Capital Improvement Program Summary City of Royal Oak

Year	Facility/Program	Proposed Improvements	Estimated Cost	Funding Source
2008	Upton Park	Construct new soccer field	\$ 125,00	MNRTF/LWCF/GF, Prvt.
2008	Exchange and Kenwood Park	Provide accessible paved parking.	\$60,000	MNRTF, Prvt., ROP, GF, CG
2009	Bike Lanes	Investigate/Plan for bike lanes along the roads	\$ 9,000	TEA, GF
2009	Outdoor Amphitheater	Investigate/Plan for outdoor amphitheater. Size and location to be determined by study.	\$ 8,000	GF/CDBG
2009	Memorial Park	Install public announcing booth system.	\$ 45,000	GF
2009	The City	Study tracks of land for possible land acquisition.	\$ 0	N/A
2009	All parks	Investigate ADA accessible issues in all parks and provide a plan for updating parks when work within these parks is scheduled.	\$ 5,000	MNRTF/LWCF/GF, Prvt.

Key:

- CDBG – Community Development Block Grant Funds
- MNRTF – MI Department of Natural Resources Trust Fund
- GF – General Funds
- TEA – Transportation Enhancement Activity Fund
- Prvt. – Private Donations/Fundraising

## SECTION VII: APPENDIX

